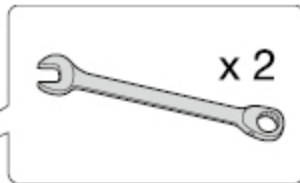
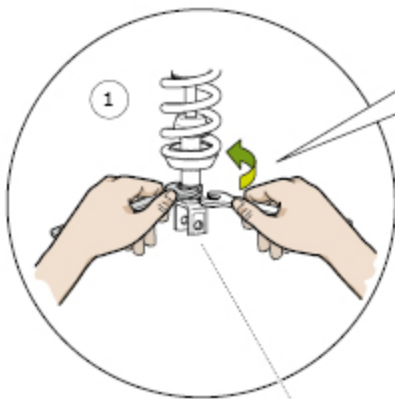




Checkpoint Öhlins

Lenght

How to Adjust Length

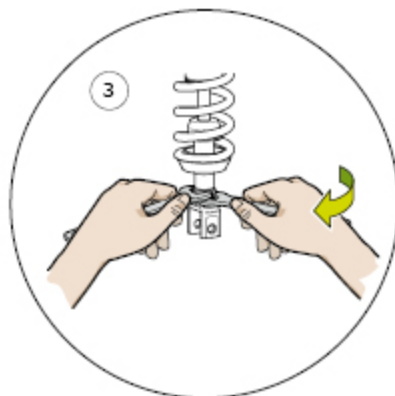
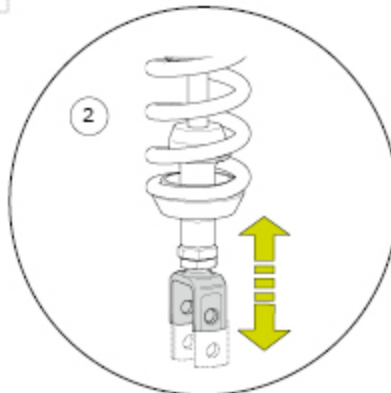


1. Use two [2] wrenches. Hold the upper nut with one wrench. Loosen the lock nut (lower nut).

Note that the end eye/bracket may have a different design.

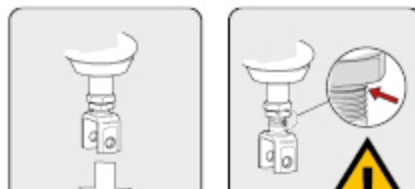


2. Adjust the end eye/bracket to the desired length.



3. Tighten the lock nut (lower nut).

▲ Warning!
The end eye/bracket shall not be threaded out more than that the groove is visible beneath the lock nut. this is maximum length.



Updated 3/18/2009



Öhlins Racing AB

Box 722

S-194 27 Upplands Väsby

Sweden

[About this page](#)